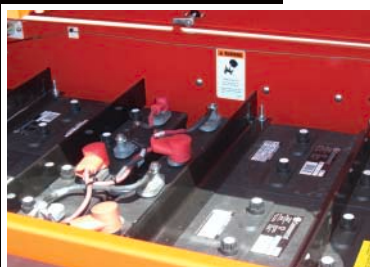


CAMERAS onsite

CAM-V Mobile Security System

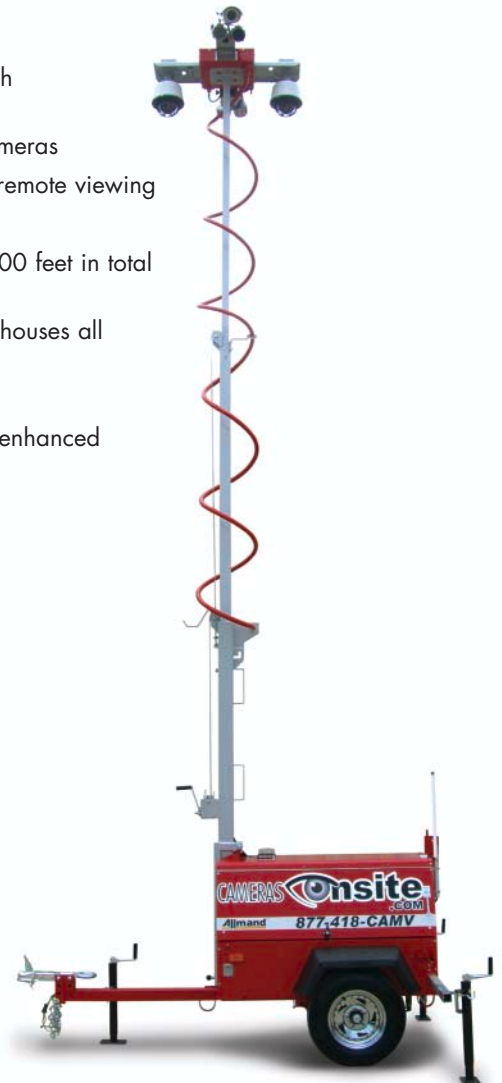


Cam-V features include:

- Easy set-up. Place. Point. Protect.
- State of the art cameras are designed for harsh environments and mobile use
- Rugged DVR records video from up to four cameras
- High speed cellular and WiFi capabilities for remote viewing
- 35X optical / 12X digital pan/tilt/zoom
- Fixed cameras with built in IR can see up to 500 feet in total darkness
- Compact, tamper resistant, self-contained unit houses all electronics
- Secure and easy to tow trailer design
- Communication antennas located on mast for enhanced reception
- Integrated GPS tracking

Applications:

- Short/long term surveillance
- Special events
- Parking lot security
- Military and border surveillance
- Local and federal security zones
- Disaster relief sites
- Construction site monitoring



11275 Windfern Rd.
Suite B
Houston, TX 77064
(877) 418-CAM-V (toll free)
(800) 480-8227 (fax)
www.camerasonsite.com



Cameras:

PTZ Cameras:

Pelco Spectra IV
 Pan turn speed 1-40 degrees per second
 Tilt speed is 1-40 degrees per second
 360 degree continuous rotation
 Electronic shutter control
 ¼ ex-view CCD produces over 540 lines of resolution color and B/W
 0.063 color, .00018 lux low light rating
 AGC, BLC, iris, white balance, and focus manual or automatic
 35 X optical zoom
 12 X digital zoom
 119 mm lens
 128 X WDM range capability
 24 Volts 73 Watts

Fixed Cameras:

Bosch LTC 0945/21
 540 Lines of Resolution
 (2) 240 Foot IR range (w/ infrared illuminators)
 3.8-60mm auto-iris varifocal lens
 Built in sunshield
 IP66 Nema-4X Rated

ALARM KIT Option:

Built-in Motion Detector
 Built-in 115 Decibel Siren
 Built-in Strobe Light
 Built-in Keypad
 Built-in Cellular Dialer
 Built-in Wireless connectivity to optional accessories
 Built-in 10-hour rechargeable battery back up

Active Alarm Options (requires ALARM KIT Option for operation):

RATTLER - Wireless Movement or Vibration Sensor (2000' range from wireless alarm system)
 THE LOOP - Wireless 10' or 20' Wireless Sensor Loop
 OUTDOOR MOTION - Outdoor Wireless Motion Detectors (40' Range PIR)
 CAMmotion - Covert Wireless Outdoor Motion Detector
 LED STROBES - LED Strobes Tower Mounted

SIGNAL BOOSTER - Double the range of your wireless security system
 WIRELESS SIREN/STROBE - Armored Siren/Strobe, can be mounted away from base of unit (AC required)
 VOICE ALERT - Armored Speaker with recordable messages that can be activated by alarm

Power:

Operates independently of a permanent power source
 Power from heavy-duty 8D batteries
 Onboard charger and maintainer
 Onboard gauge indicates battery voltage
 Voltage regulation system alerts of a low battery through a highly visible strobe light
 Generator assist model option

Tower:

23 ft. galvanized three-section tower
 Self-lubricating nylon wear pads
 Dual manual winch system

Trailer:

Formed, welded steel frame
 Adjustable height, reversible combination, 2 in. (50 mm) ball, 3 in. (75 mm) pintle hitch
 Heavy-duty enclosure with 10-gauge side panels and 12-gauge hood
 Lockable, 12-gauge lift-up access doors
 LED stop, turn, and running taillights
 Forklift pockets, lifting eye and tie down rings
 Ground rod and lug standard lightning protection
 Three point design stabilizers
 Tower center mounted between two retractable rear outriggers and tongue jack
 Remains operational in wind gusts up to 65 mph (104.6 kph)

Dimensions:

Height mast lowered: 6ft. 7 in. (2.04 m)
 Height mast raised: 23 ft (7.0 m)
 Length with fixtures: 12 ft. (3.66 m)
 Width: 4ft. 4in. (1.4 m)
 Outrigger Width: 7 ft. 9.5 in. (2.4 m)
 Weight: 1680 lbs. (763.6 kg)
 Wheels and Tires: 13 in. (37.3 cm)

Options:

Variety of cameras (max of 4)
 Cellular and wireless connectivity
 DeWalt MobileLock GPS locator with anti-theft alarm
 LoJack RL# security system
 Sealed batteries
 Generator assist model



11275 Windfern Rd.
 Suite B
 Houston, TX 77064
 (877) 418-CAM-V (toll free)
 (800) 480-8227 (fax)
www.camerasonsite.com